

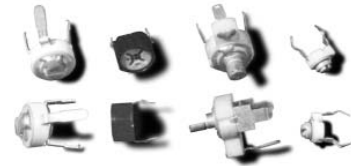


# Miniature Ceramic Trimmer Capacitors

# 242 Series

## ■ FEATURES

- Excellent microwave characteristics
- Aluminum ceramic stator is used in this series
- Heat, humidity, and cold have little effect on durability and performance
- Reliable characteristics shown by the high Q-factor
- Applicable to various frequencies, from low to ultra-high
- Color coded



## ■ CHARACTERISTICS

Item	Characteristics		
	4mm Style	6mm Style	7mm Style
Operating Temperature Range	-30°C ~ +85°C	-30°C ~ +85°C	-35°C ~ +85°C
Standard Working Voltage (WVDC)	50	50	250
Withstanding Voltage (VDC)	110	110	500
Insulation Resistance	>10 <sup>4</sup> MΩ	>10 <sup>4</sup> MΩ	>10 <sup>4</sup> MΩ
Rotation Torque	20~150gr-cm	20~200gr-cm	40~400gr-cm

## ■ PART NUMBERS AND SPECIFICATIONS

Diameter	Part Number	Capacity Range (pF)	Temp. Coeff. (ppm/°C)	Q Factor @10MHz	Color Code
4mm	<b>242-1230</b>	1.2 ~ 3.0	N100±250	>500	Black
	<b>242-1460</b>	1.4 ~ 6.0	N250±250	>500	Red
	<b>242-1810</b>	1.8 ~ 10.0	N550±300	>300	None
	<b>242-2820</b>	2.8 ~ 20.0	N550±300	>300	Blue
	<b>242-4030</b>	4.0 ~ 30.0	N1200±500	>200	Yellow
6mm	<b>242-3010</b>	3.0 ~ 10.0	N470±300	>300	White
	<b>242-4221</b>	4.2 ~ 20.0	N750±300	>300	Red
	<b>242-6230</b>	6.2 ~ 30.0	N750±300	>200	Green
	<b>242-9850</b>	9.8 ~ 50.0	N1200±500	>200	Brown
7mm 3410	<b>242-3410-34</b>	4.0 ~ 34	N500±800	>300	Yellow
	<b>242-3410-45</b>	5.0 ~ 45	N1400±800	>200	Brown
	<b>242-3410-55</b>	5.0 ~ 55	N1400±800	>200	Green
	<b>242-3410-70</b>	6.0 ~ 70	N1400±800	>200	None
7mm 3810	<b>242-3810-12</b>	2.0 ~ 12.0	NPO±200	>300	None
	<b>242-3810-23</b>	2.5 ~ 23.0	N450±200	>300	Blue
	<b>242-3810-45</b>	5.0 ~ 45.0	N1400±800	>200	Brown
	<b>242-3810-55</b>	5.0 ~ 55.0	N1400±800	>200	Green
	<b>242-3810-70</b>	6.0 ~ 70.0	N1400±800	>200	Gray
	<b>242-3810-100</b>	12.0 ~ 100.0	N1400±800	>200 / 1MHz	Black



XICON PASSIVE COMPONENTS • (800) 628-0544

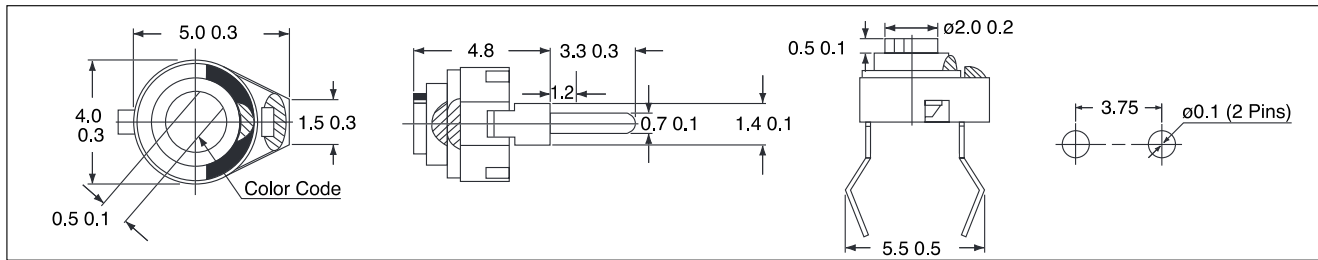
XC-600022

Specifications are subject to change without notice. No liability or warranty implied by this information. Environmental compliance based on producer documentation.

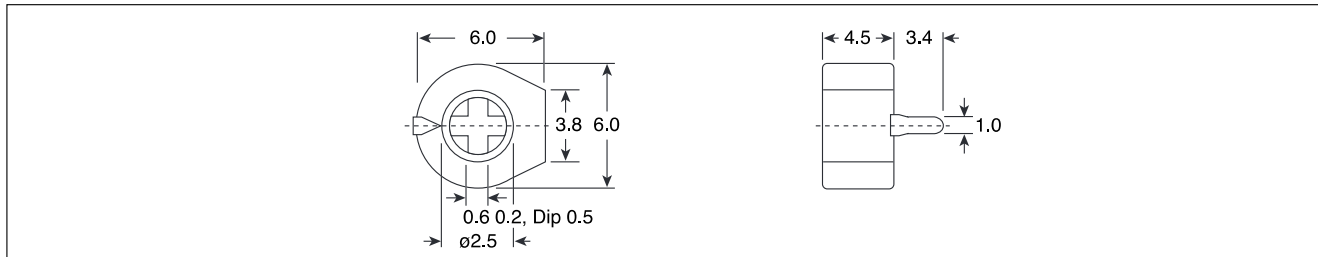
Date Revised: 9/30/05

## ■ DIMENSIONS (mm)

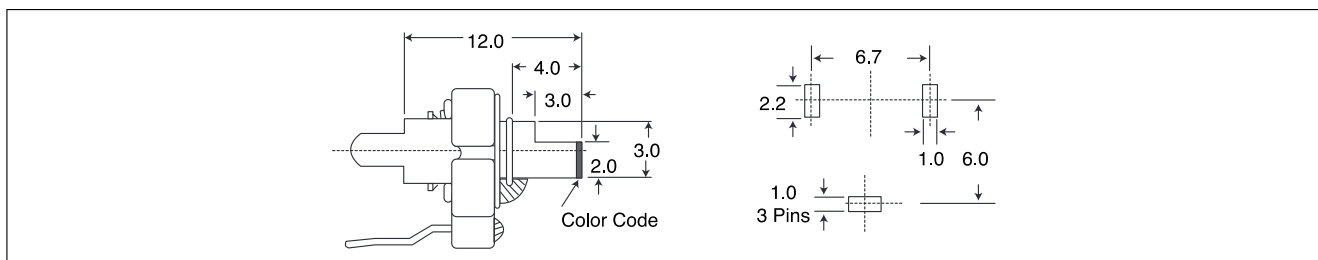
### 4mm Style



### 6mm



### 7mm 3410 Style



### 7mm 3810 Style

