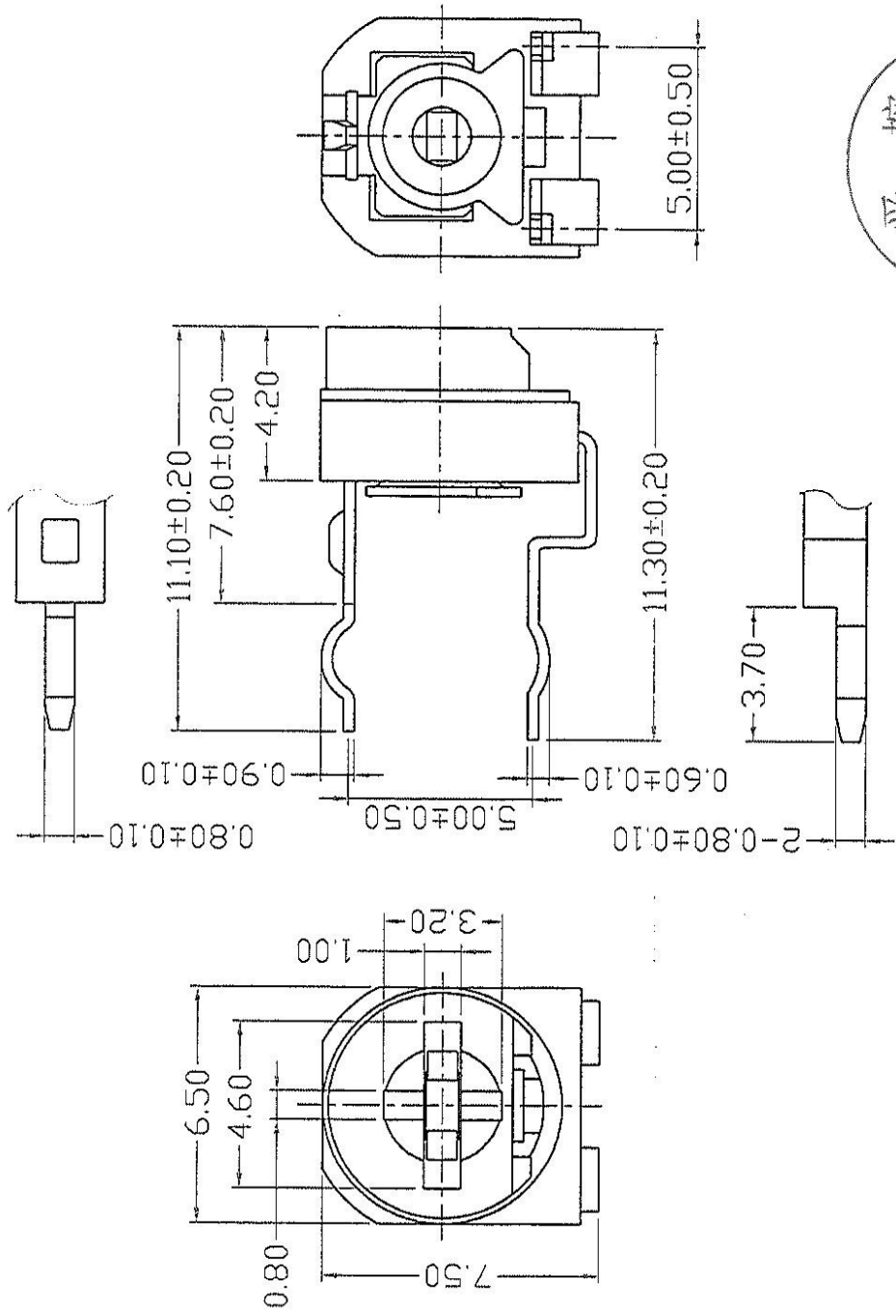
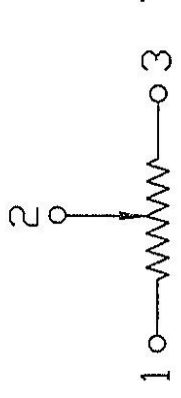
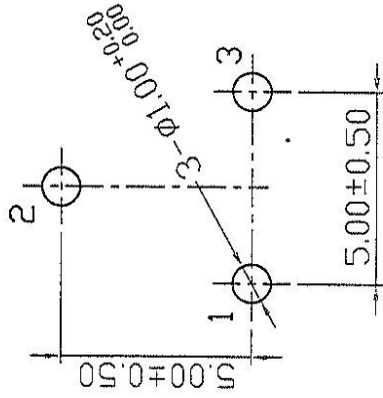


APPEARANCE DRAWING



受 控
工 程 部
05年8月30日



RECOMMEND P.C.B LAYOUT CIRCUIT DIAGRAM

Tolerance for undefined angle ± 10°
 Tolerance for undefined dimension 0-10mm ± 0.3mm
 Tolerance for undefined dimension 10-60mm ± 0.3mm

| | | | | |
|----------|---------|---------|----------|-------------------------|
| DRAWN | 何 日 180 | 30-8-05 | MODEL NO | RM-065 |
| CHECKED | 何 日 180 | 30-8-05 | SCALE | DRAWING NO REV SHEET/OF |
| APPROVED | 何 日 180 | 30-8-05 | 5:1 | TEC-WI-E-WX-047 B3 |

產品規格說明書
PRODUCT SPECIFICATIONS

| | |
|---------------|--|
| 產品名稱： | Ø6mm 碳膜注塑型半固定電位器 |
| Product Name: | Ø6mm Phenolic Moulding Type Semi-Fixed Potentiometer |
| 型號： | RM-06x 系列 Series |
| Model No.: | |

I. 電器性能

ELECTRICAL CHARACTERISTICS

| | |
|-----------------------------------|--|
| 1.1 總阻值 Nominal Resistance: | 100Ω ~ 1MΩ |
| 1.2 阻值誤差 Resistance Tolerance: | □±10% □±20% □±30% |
| 1.3 殘留阻值 Residual Resistance | 阻值 $R \leq 10K\Omega$, 殘留阻值為 10Ω; 10KΩ < R < 1M 殘留阻值 50Ω; 1MΩ ≤ R 殘留阻值 200Ω。(參考 JIS-6443) Resistance $R \leq 10K\Omega$, its residual resistance max. 10Ω; Resistance 10KΩ < R < 1M, its residual resistance max. 50Ω; Resistance 1MΩ ≤ R, its residual resistance max. 200Ω. (Refer to JIS-6443) |
| 1.4 線性 Resistance Taper | 直線 (B) Linear (B) |
| 1.5 功率 Rated Power | 0.1W |
| 1.6 使用電壓 Operating Voltage | 不超於 50V。 50V Max. |
| 1.7 旋轉壽命 Rotational Life | 空載旋轉 100 圈後，阻值變化最大為 ±15%。 Max. ±15% change in resistance after 100 unloaded rotations. |
| 1.8 負載壽命 Load Life | 加額定功率 3 小時，阻值變化最大為 ±5%。 Max. ±5% change in resistance after 3 hours loaded. |

產品規格說明書
PRODUCT SPECIFICATIONS

II. 機械性能

MECHANICAL CHARACTERISTICS

| | |
|---------------------------------|---|
| 2.1 旋轉角度 Rotational Angle | 200°± 20° |
| 2.2 扭力矩 Rotational Torque | 60 ~ 300 g. cm. (空載旋轉 3 圈後測力矩) Remark: After 3 unloaded rotations, then test rotational torque. 60~300g.cm |
| 2.3 止擋強度 Stop-end Strength | 最小達 400g. cm 以上。 400g. cm minimum |
| 2.4 機械強度 Mechanical Strength | 電阻體受最小 1 Kg. 壓力不會破裂。 Bakelite Base not to be broken down under a force of 1 Kg. |

III. 氣候特性


CLIMATIC CHARACTERISTICS

| | |
|-----------------------------------|---|
| 3.1 使用溫度 Operating Temp. | -5 °C ~ 70°C |
| 3.2 溫度特性 Temp. Characteristics | 以 70°C 焗 5 小時, 阻值變化在 +5 ~ -30% 以內。 Resistance change within +5 ~ 30% after 5 hours at 70°C. |
| 3.3 濕度特性 Humidity Char. | 加額定功率, 以 40°C 溫度及相對濕度 90% 的情況下 350 小時, 阻值變化最大為 20%。 Maximum resistance change within 20% after 350 hours loaded at 40°C and R. H. 90%. |

IV. 焊錫條件

SOLDERING CONDITIONS

| | |
|-------------------------|------------------|
| 4.1 焊錫溫度 Temperature | 260°C~270°C |
| 4.2 焊錫時間 Time | 3 秒 3 seconds |

| | | | |
|-------------------|------------------|---|---------------------|
| 製作 Prepared By | 審查 Checked By | 核准 Approved By | 存檔號 Document No. |
| Scott Choi | 李卓強 |  | 001-06-01-2011 |
| 06-01-2011 | 6-1-2011 | 2-17-2011 | 修訂版本 Version No. |
| | | | A3 |